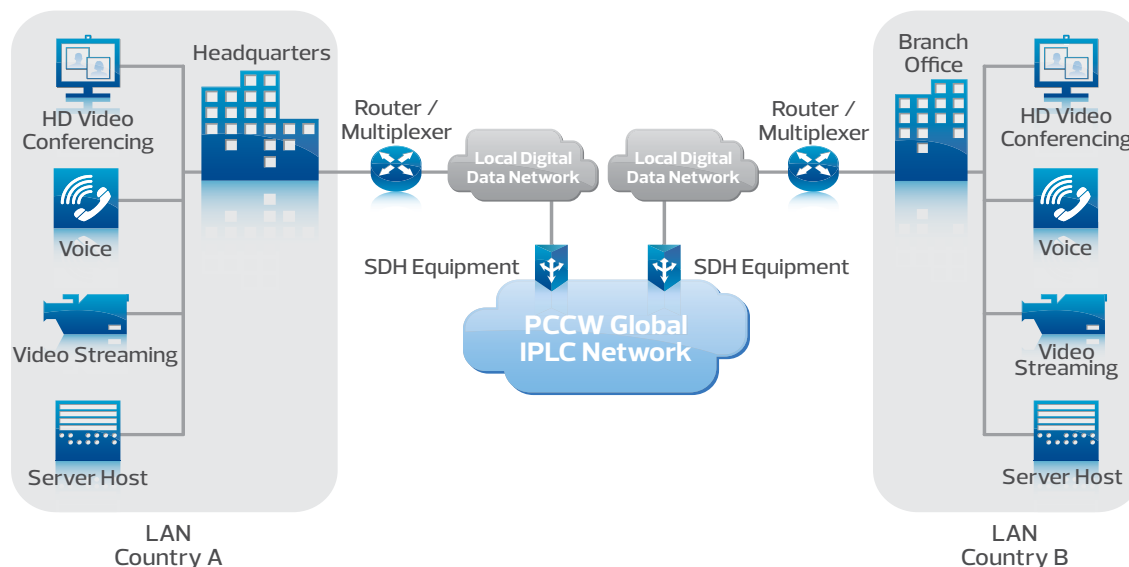


## International Private Leased Circuit

PCCW Global's International Private Leased Circuit (IPLC) is an end-to-end managed bandwidth service that provides customers with dedicated pure Layer 1 international data bandwidth for various types of real-time and mission-critical applications including data, voice and video.

### Network diagram



### Key benefits to your business

- Cross-border connections for every network topology and bandwidth need
- Exclusive dedicated end-to-end links to prevent hacker attacks
- Protocol transparency with minimal transmission delay, supporting the most demanding client-server applications
- Wide selection of bandwidth and interface options for seamless integration
- Extensive global coverage in over 120 countries around the world

### Service options

- Protected, unprotected and premium protection services
- IRU (Indefeasible Right of Use)

## Specifications

- Protected Services\*
  - Service provided on a cable system that is designed with working and protection paths. In the event of a fault or cable cut on the working path, the system will automatically switch to the protection path
- IRU (Indefeasible Right of Use)
  - Various IRU leasing terms is available to provide high flexibility for different applications, allow customers to build a network that matches different traffic requirements
- Premium protection\* is designed to offer the customers a freedom to choose cable path and level of protection to meet their own unique network performance requirements in terms of diversity and survivability against multiple cable breaks without complicating the customer's network infrastructure design

## Features

- Provide a hassle-free network design
- Customer can be assured against bandwidth pricing fluctuations and supply shortage

\* Additional cost will be incurred separately and will be offered subject to feasibility check

International Private Leased Circuit

[www.pccwglobal.com](http://www.pccwglobal.com)

### Contact us

**Americas**  
**Herndon, VA, USA**  
Tel +1 703 621 1600  
[americas@pccwglobal.com](mailto:americas@pccwglobal.com)

**Asia**  
**Hong Kong**  
Tel +852 2888 6688  
[asia-cis@pccwglobal.com](mailto:asia-cis@pccwglobal.com)

**Europe**  
**London, UK**  
Tel +44 (0) 20 7173 1700  
[europe@pccwglobal.com](mailto:europe@pccwglobal.com)

**Middle East**  
**Dubai, UAE**  
Tel +971 (0) 4 446 7480  
[mena@pccwglobal.com](mailto:mena@pccwglobal.com)

**Africa**  
**Johannesburg, South Africa**  
Tel +27 11 797 3300  
[africa@pccwglobal.com](mailto:africa@pccwglobal.com)

**Singapore**  
Tel +65 6249 3988  
[ssao@pccwglobal.com](mailto:ssao@pccwglobal.com)

**Paris, France**  
Tel +33 (0)1 84 88 05 88  
[europe@pccwglobal.com](mailto:europe@pccwglobal.com)