

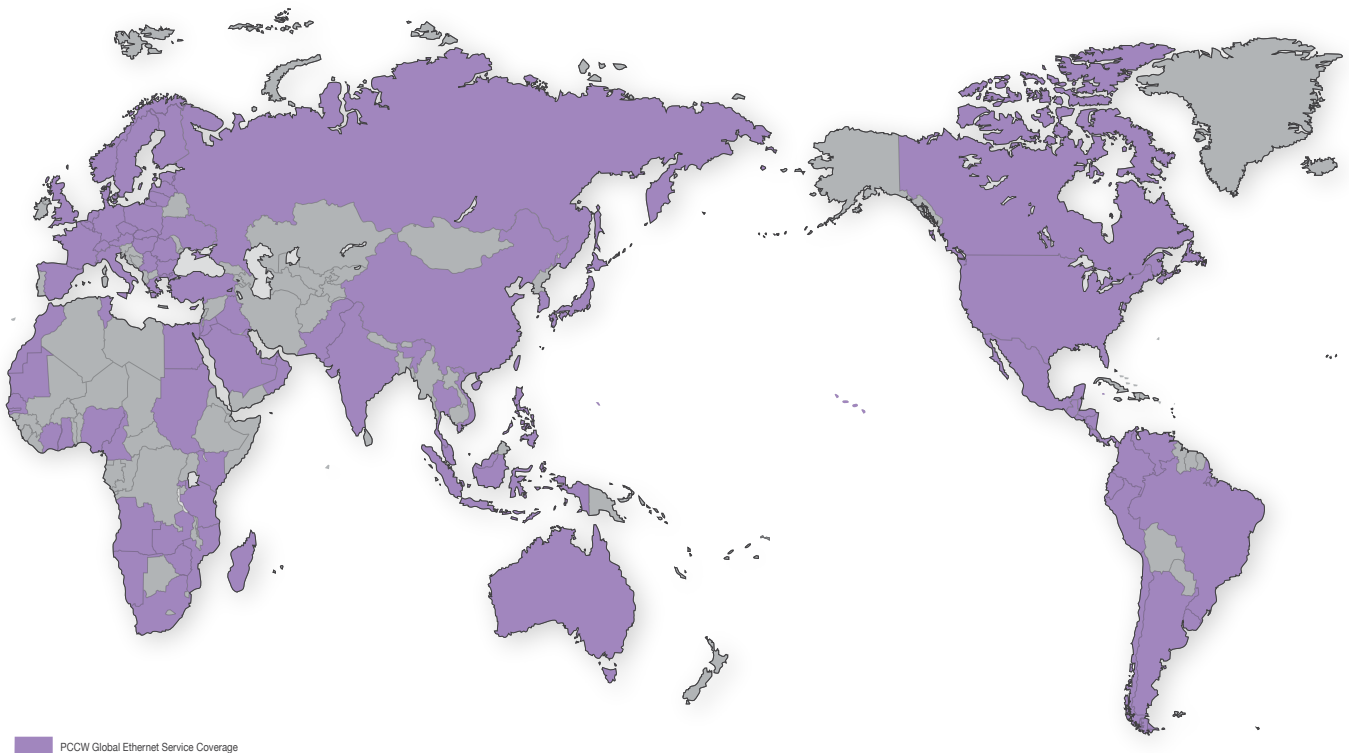
Global Ethernet Solutions

Switched and Dedicated Ethernet Services

PCCW Global's Ethernet solutions combine the reliability and ubiquity of Ethernet with Next Generation global transport technology. Offering point-to-point (E-LINE), point to multipoint (E-TREE) and multipoint-to-multipoint (E-LAN) services, PCCW Global Ethernet solutions enable the extension of LAN infrastructure for WAN connectivity with rates starting at 2Mbps ranging up to 10Gbps.

Our Ethernet solutions are available in major cities in over 90 countries in the world.

Network coverage



Key benefits to your business

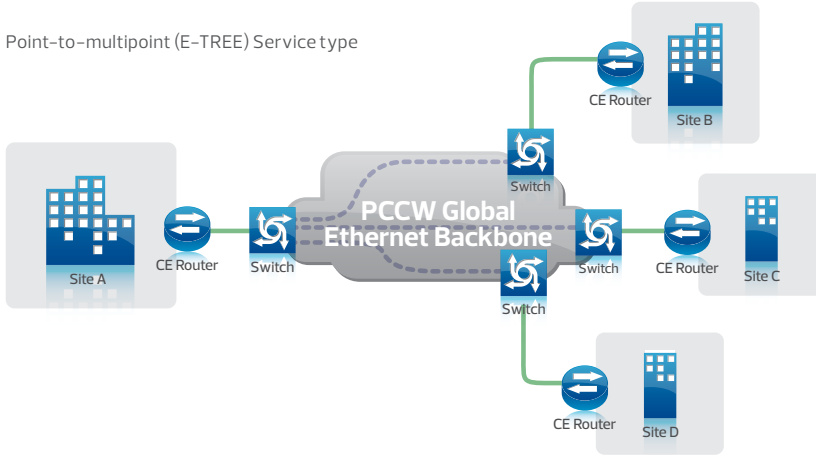
- Variable bandwidth enabling you to fine-tune your network needs at each location
- No protocol conversion required ensuring interoperability between LAN, MAN and WAN
- Easier installation and management allow for rapid provisioning compared to other platforms
- Delivered directly to you via CAT5e wiring or fiber
- Scalable for long term network evolution connectivity

Network diagram

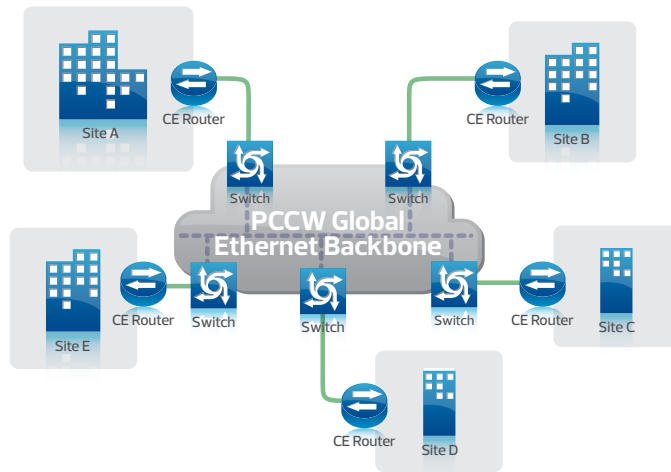
Point-to-point (E-Line) Service type



Point-to-multipoint (E-TREE) Service type



Multipoint-to-multipoint (E-LAN) Service type



- Ethernet Access Circuit
- - - PCCW Global Ethernet Backbone

Specifications

	Switched Ethernet	Dedicated Ethernet
Architecture	EoMPLS	Sonet, SDH, DWDM
Throughput	2Mbps – 1Gbps	2Mbps – 10Gbps
Network Interface	Fast or Gig Ethernet	Fast, Gig Ethernet or 10Gig Ethernet
Network Options	Long-haul and metro configurations	Long-haul and metro configurations
Availability	Available at most locations	Available at most locations

Features*

- Highly scalable and variable transport speeds from 2Mbps up to 10Gbps
- Switched and Dedicated Ethernet available in fixed bandwidth
- Dedicated Ethernet over SDH
- Dedicated Ethernet over DWDM (LAN-Phy)
- Point-to-point service (E-LINE)
- Point-to-multipoint service (E-TREE)
- Multipoint-to-multipoint service (E-LAN)
- Resilient transport services for high reliability
- Standards-based IEEE Ethernet service for Layer 2 transport
- Protocol transparent
- 802.1Q VLAN and 802.1QinQ tunneling supported
- Jumbo MTU support from 1500 to 9000

*Not all features are available in all markets; please contact PCCW Global to determine availability

Global Ethernet Solutions

www.pccwglobal.com

Contact us

Americas
Herndon, VA, USA
Tel +1 703 621 1600
americas@pccwglobal.com

Asia
Hong Kong
Tel +852 2888 6688
asia-cis@pccwglobal.com

Europe
London, UK
Tel +44 (0) 20 7173 1700
europe@pccwglobal.com

Middle East
Dubai, UAE
Tel +971 (0) 4 446 7480
mena@pccwglobal.com

Africa
Johannesburg, South Africa
Tel +27 11 797 3300
africa@pccwglobal.com

Singapore
Tel +65 6249 3988
ssa@pccwglobal.com

Paris, France
Tel +33 (0)1 84 88 05 88
europe@pccwglobal.com